

WHITTINGTON  
APARTMENTS





# The essence of modern London living

## WHITTINGTON APARTMENTS

---

**03**      **GORDON CLOSE**

---

**04**      **HIGHGATE HILL**

---

**07**      **LIFESTYLE**

---

**08**      **AREA**

---

**10**      **FLOOR PLANS**

---

**12**      **LOCATION**

---

**13**      **FEATURES**

---

**13**      **CONTACT**





Gordon Close









---

## Contemporary yet comfortable

Whittington Apartments offers a rare opportunity to buy into a very distinctive development in a highly sought after setting of North London. Consisting of a spectacular collection of 1 and 2 bedroom properties, Whittington Apartments embodies the essence of contemporary London living.

Cool, clean and incredibly impressive, yet cosy enough to still feel like home - truly a collection of homes for all seasons.

Whittington Apartments is a landmark Highgate Hill development of newly built homes where space, light and luxury combine to create a unique collection of homes for all seasons.









# Socially and culturally interesting place to live

Highgate and The Hill - London's "Green Lung" - The words are those of the world-famous violinist and humanist Yehudi Menuhin and he used them as a slogan to prevent the overdevelopment of Witanhurst's wooded acres encroaching on Hampstead Heath back in the 1980s - itself a bit of history which sums up living in Highgate. It reminds us that Highgate Hill is within easy reach of the centre of town by public transport and, with Hampstead Heath, Waterlow Park and its necklace of smaller parks, the healthy, windswept hill on which it stands is really the first area of green space you reach as you travel north from the centre of London.

The area has a distinct character which has historically attracted artists from contemporary musicians to Dickens and Betjeman. As well as a whole host of other people who now, as in previous centuries, make it a socially and culturally interesting place to be without the pretence of some other areas, and one whose character they want to preserve and enjoy. It is perfectly positioned for easily accessing everything useful including transport connections by bus or underground at Archway and Highgate.







For culture and leisure pursuits, Highgate Hill and the Village are hard to beat.

We have Upstairs at the Gatehouse, a consistently award-winning theatre with possibly the finest off-West End programme anywhere in London; not to mention Highgate's own Literary and Scientific Institution, the Highgate Society (Yehudi was its Patron), world-famous Highgate Cemetery, Jackson's Lane, a clutch of cinemas, nearby Alexandra Palace, gastro-pubs, good shops on site or within easy reach. And if you need exercise, the area is well-provided with sports facilities, pools, fitness gyms, pilates centres, cricket and rugby clubs, or just plain, good jogging routes. There are few areas of London where a working couple can live with such pleasure and ease as in Highgate and The Hill: it encompasses every lifestyle you can imagine.

---

**Encompasses  
every lifestyle  
you can imagine**







91 HIGHGATE



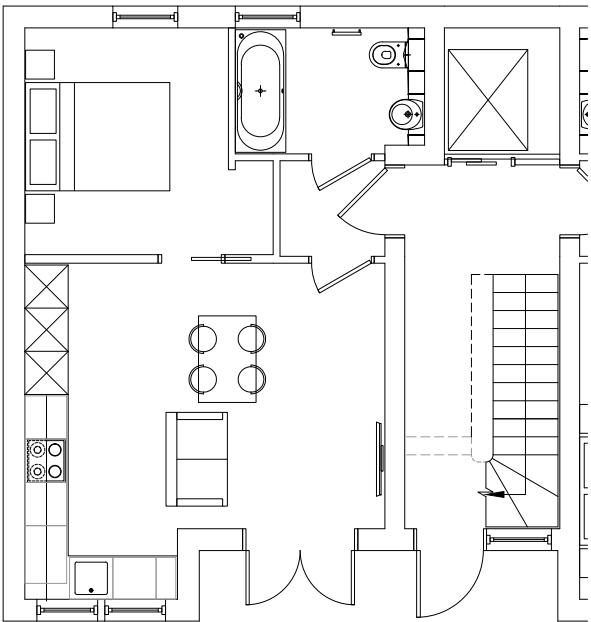


# Typical Floor Plans:

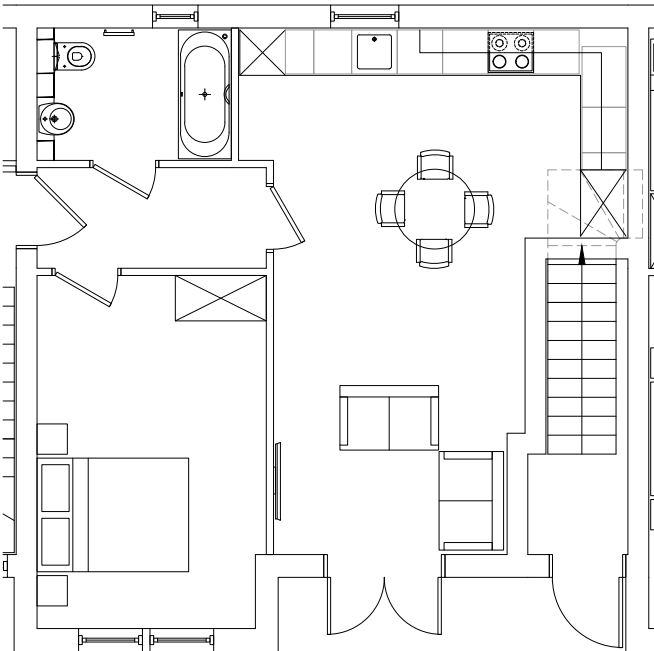
## No. 1 & 2 Gordon Close



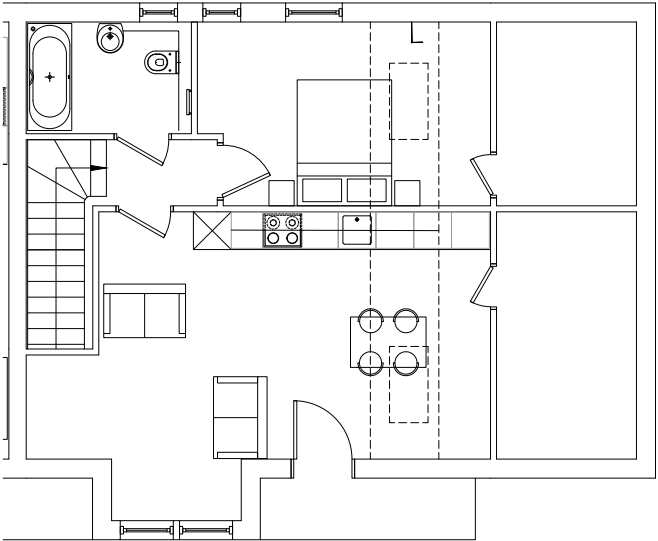
FLAT 1, 5 & 7 398 SQFT / 37 SQM



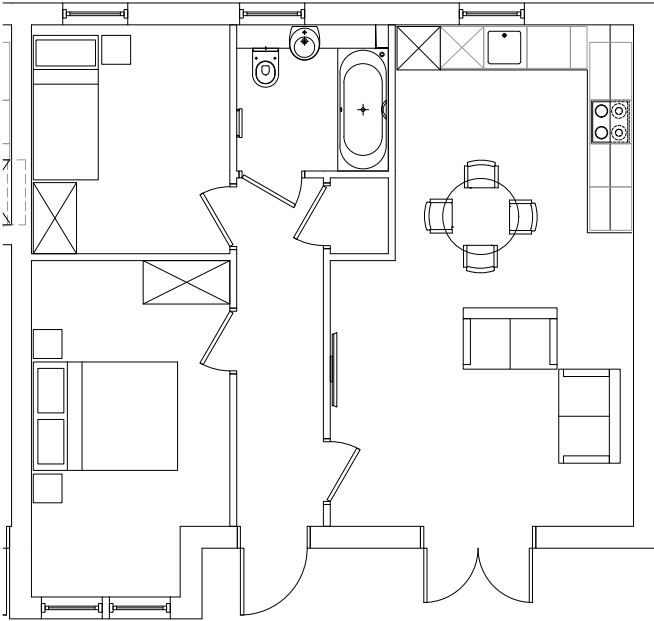
FLAT 2 541 SQFT / 50 SQM



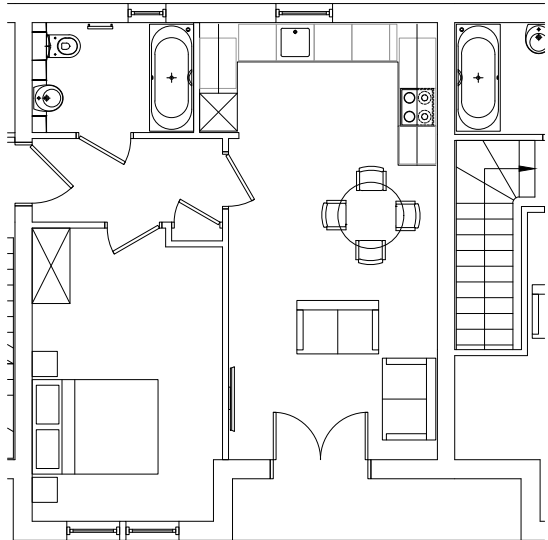
FLAT 3 560 SQFT / 52 SQM



FLAT 4 624 SQFT / 58 SQM



FLAT 6 & 8 495 SQFT / 46 SQM



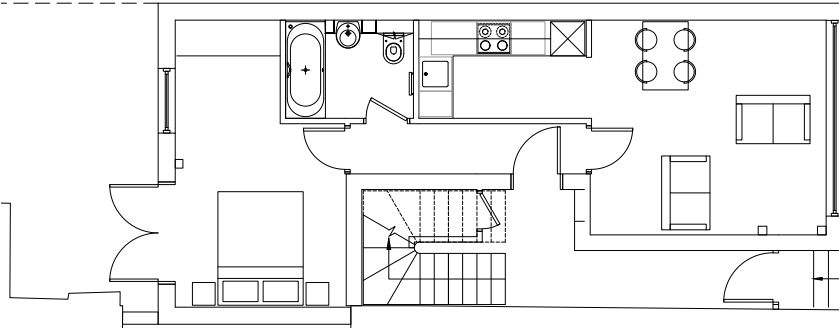


# Typical Floor Plans:

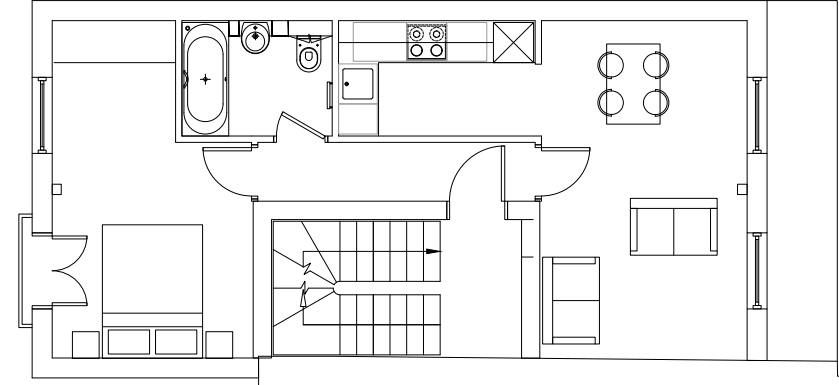
## 91 Highgate Hill



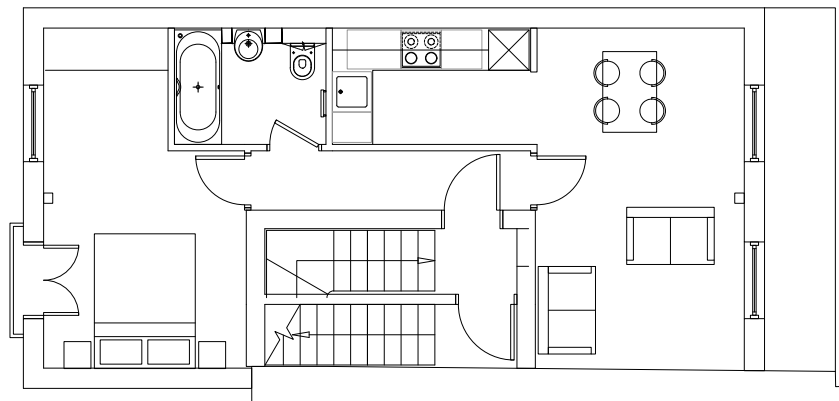
FLAT 1 452 SQFT / 42 SQM



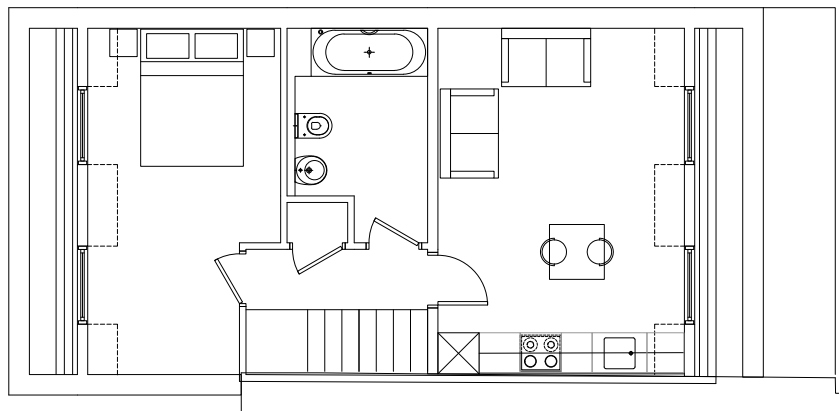
FLAT 2 452 SQFT / 42 SQM



FLAT 3 452 SQFT / 42 SQM



FLAT 4 398 SQFT / 37 SQM





# Location

1	Waterlow Park
2	Lauderdale House
3	Archway Station — <i>Northern Line, Zone 2</i>
4	The Whittington Hospital
5	St Joseph's Catholic Primary School — <i>Ofsted rated Outstanding</i>
6	Highgate Cemetery
7	The Channing School for Girls Independent Day School
8.	Highgate Village

9	St Aloysius RC College
10	St Michaels Church
11	Archway Park
	Whittington Apartments

## DIRECTIONS

Archway Tube Station – 4 minute walk (0.2 miles)  
Highgate Village – 11 minute walk (0.4 miles)  
Waterlow Park – 5 minute walk (0.2 miles)





# Features

## PROPERTY

- Engineered Wooden Flooring
- Gas Central Heating
- Purpose Made Fully Fitted Kitchens
- Quartz Worktops
- Integrated appliances
- High specification Fully Tiled Bathrooms
- Purpose Made Fitted Wardrobes
- Private Courtyard (Gordon Close)
- 10 Year CRL Guarantee

## TRANSPORT LINKS

- |          |           |
|----------|-----------|
| Highgate | 0.4 miles |
| Archway  | 0.6 miles |

## AVAILABILITY

May 2016



# Contact

## Winkworth

## WINKWORTH

36 Highgate High Street  
Highgate  
London N6 5JG

T: 020 8341 1988  
E: [highgate@winkworth.co.uk](mailto:highgate@winkworth.co.uk)  
[www.winkworth.co.uk](http://www.winkworth.co.uk)



## PAUL BELCHAK & CO

Paul Belchak & Co  
34 Artillery Lane  
Spitalfields  
London E1 7LS

T: 020 7375 3444  
E: [info@paulbelchak.com](mailto:info@paulbelchak.com)  
[www.paulbelchak.com](http://www.paulbelchak.com)

Misrepresentation Act – Paul Belchak & Co and Winkworth, for themselves and the vendor / lessor of this property give notice that these particulars do not form, or form part of any contract. They are intended to give fair description of the property and whilst every part has been made to ensure their accuracy this cannot be guaranteed. Any intending purchaser must therefore satisfy themselves by inspection or otherwise. Paul Belchak & Co and Winkworth, nor any of their employees, has any authority to make or give any further representations or warranty whatsoever in relation to this property. All figures and measurements are approximate. The agents have not tested any of the services.

DESIGN & CGI: LINE-CREATIVE.UK





# WHITTINGTON APARTMENTS

Joint venture development by



Winkworth

RGK  
PROPERTIES

Oakforest  properties